

抜群のコストパフォーマンスでお応えします

X2D,X3D,X4D,X5D $\Phi 14\sim\Phi 63$



HY series for Drilling



←曾根田工業ホームページへ

有限会社

曾根田工業

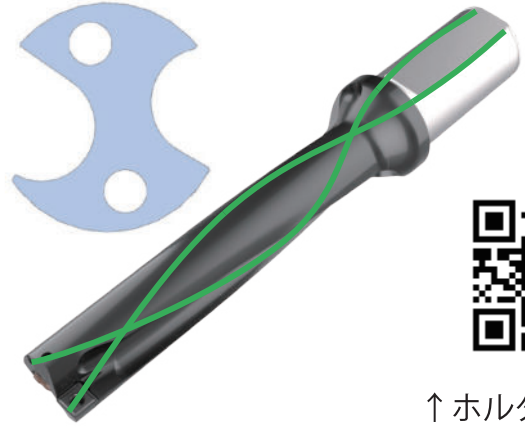
438-0233 静岡県磐田市駒場1-12

TEL:0538-66-8605

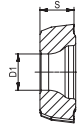
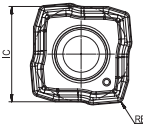
<https://www.soneda.jp/>

FAX : 0538-66-8645



HY series--Drill



XONT--Central inserts

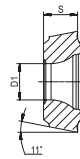
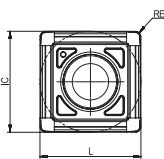


↑ホルダー規格表


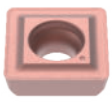
Central inserts	Designation	Machining conditions				● Good	● General	● Bad
		Dimension(mm)				●	●	●
		IC	S	RE	D1	P	M	K
						AP301U	AP273U	AP301U
 DM universal geometry	XONT 020204E-DM	4.9	2.4	0.4	2.2	●	-	●
	XONT 030305E-DM	5.7	2.6	0.5	2.5	●	-	●
	XONT 030305E-DL	5.7	2.6	0.5	2.5	●	●	-
	XONT 040305E-DM	6.8	2.8	0.5	2.8	●	-	●
	XONT 040305E-DL	6.8	2.8	0.5	2.8	●	●	-
	XONT 050305E-DM	8.4	3.0	0.5	3.2	●	-	●
 DL sharp geometry	XONT 050305E-DL	8.4	3.0	0.5	3.2	●	●	-
	XONT 060406E-DM	10.2	3.5	0.6	4.0	●	-	●
	XONT 060406E-DL	10.2	3.5	0.6	4.0	●	●	-
	XONT 070406E-DM	12.35	4.0	0.6	4.0	●	-	●
	XONT 070406E-DL	12.35	4.0	0.6	4.0	●	●	-
	XONT 080508E-DM	14.9	4.5	0.8	4.7	●	-	●
	XONT 080508E-DL	14.9	4.5	0.8	4.7	●	●	-
	XONT 090608E-DM	17.9	5.5	0.8	4.75	●	-	●
XONT 090608E-DL	17.9	5.5	0.8	4.75	●	-	-	

● Stocked ○ Unstocked ▲ Stopped in the near future

SPET--- Peripheral inserts



AP=PVD AC=CVD

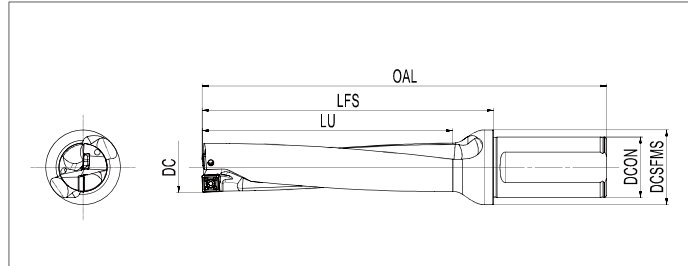
Peripheral inserts	Designation	Machining conditions				● Good	● General	● Bad		
		Dimension(mm)				●	●	●	●	
		IC	S	RE	D1	P	M	K	S	
						AP273U	AC371P	AP371M	AC271P	AP471S
 DM universal geometry	SPET 020204E-DM	5.1	2.4	0.4	2.2	●	-	-	●	-
	SPET 020205E-DL	5.1	2.4	0.5	2.2	●	-	●	●	○
	SPET 030305E-DM	6.0	2.6	0.5	2.5	●	●	-	●	○
	SPET 030306E-DL	6.0	2.6	0.6	2.5	●	●	●	●	○
	SPET 040305E-DM	7.4	2.8	0.5	2.8	●	●	-	●	○
	SPET 040307E-DL	7.4	2.8	0.7	2.8	●	●	●	●	○
	SPET 050305E-DM	8.9	3.0	0.5	3.2	●	●	-	●	○
	SPET 050308E-DL	8.9	3.0	0.8	3.2	●	●	●	●	○
	SPET 060406E-DM	10.65	3.5	0.6	4.2	●	●	-	●	○
	SPET 060408E-DL	10.65	3.5	0.8	4.2	●	●	●	●	○
	SPET 070406E-DM	12.65	4.0	0.6	4.0	●	●	-	●	-
	SPET 070410E-DL	12.65	4.0	1.0	4.0	●	●	-	●	-
 DL sharp geometry	SPET 080508E-DM	15.45	4.5	0.8	4.7	●	●	-	●	-
	SPET 080510E-DL	15.45	4.5	1.0	4.7	●	●	-	●	-
	SPET 090608E-DM	18.6	5.5	0.8	4.75	●	-	-	●	-
	SPET 090610E-DL	18.6	5.5	1.0	4.75	●	-	-	●	-

● Stocked ○ Unstocked ▲ Stopped in the near future



HY series drill body

LU/DC=2

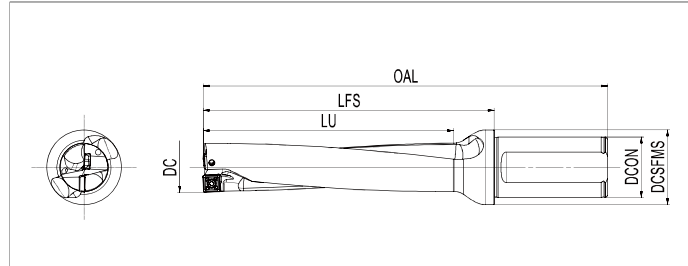


Designation	Dimension (mm)						Weight Kg	Insert	Screw & Wrench
	DC	LU	OAL	DCON	LFS	DCSFMS			
HY-2D140-S20-SP02	14.0	31	94	20	44	25	0.16	XONT 020204E SPET 020204E	SP020045 FT-TP06
HY-2D145-S20-SP02	14.5	33	96	20	46	25	0.16		
HY-2D150-S20-SP02	15.0	34	97	20	47	25	0.16		
HY-2D155-S20-SP02	15.5	36	99	20	49	25	0.17		
HY-2D160-S20-SP02	16.0	36	101	20	51	25	0.17		
HY-2D165-S20-SP03	16.5	37	102	20	52	25	0.17	XONT 030305E SPET 030305E	SP022049 FT-TP07
HY-2D170-S25-SP03	17.0	38	109	25	53	32	0.28		
HY-2D175-S25-SP03	17.5	40	111	25	55	32	0.29		
HY-2D180-S25-SP03	18.0	40	112	25	56	32	0.29		
HY-2D185-S25-SP03	18.5	40	112	25	56	32	0.29		
HY-2D188-S25-SP03	18.8	40	112	25	56	32	0.29		
HY-2D190-S25-SP03	19.0	42	114	25	58	32	0.30		
HY-2D195-S25-SP03	19.5	44	116	25	60	32	0.31		
HY-2D200-S25-SP04	20.0	44	117	25	61	32	0.32	XONT 040305E SPET 040305E	SP025072 FT-TP08
HY-2D205-S25-SP04	20.5	46	120	25	64	32	0.32		
HY-2D210-S25-SP04	21.0	46	120	25	64	32	0.32		
HY-2D215-S25-SP04	21.5	47	121	25	65	32	0.32		
HY-2D220-S25-SP04	22.0	48	122	25	66	32	0.34		
HY-2D230-S25-SP04	23.0	51	125	25	69	32	0.35		
HY-2D240-S25-SP05	24.0	53	127	25	71	32	0.35	XONT 050305E SPET 050305E	SP030082 FT-TP09
HY-2D250-S25-SP05	25.0	56	130	25	74	32	0.37		
HY-2D260-S32-SP05	26.0	56	137	32	77	40	0.58		
HY-2D270-S32-SP05	27.0	59	139	32	79	40	0.60		
HY-2D280-S32-SP05	28.0	60	142	32	82	40	0.63		
HY-2D290-S32-SP05	29.0	62	144	32	84	40	0.65	XONT 060406E SPET 060406E	SP035094 FT-TP10
HY-2D300-S32-SP06	30.0	65	147	32	87	40	0.65		
HY-2D310-S40-SP06	31.0	66	160	40	90	48	1.02		
HY-2D320-S40-SP06	32.0	68	162	40	92	48	1.04		
HY-2D330-S40-SP06	33.0	70	165	40	95	48	1.07		
HY-2D340-S40-SP06	34.0	73	168	40	98	48	1.10		
HY-2D350-S40-SP06	35.0	76	171	40	101	48	1.14		



HY series drill body

LU/DC=2

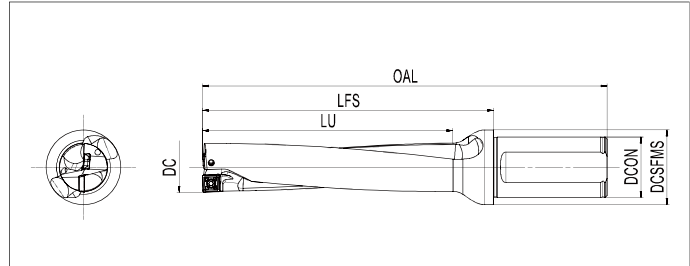


Designation	Dimension (mm)						Weight Kg	Insert	Screw & Wrench
	DC	LU	OAL	DCON	LFS	DCSFMS			
HY-2D360-S40-SP07	36.0	77	174	40	104	48	1.16	XONT 070406E SPET 070406E	SP035094 FT-TP10
HY-2D370-S40-SP07	37.0	79	175	40	105	48	1.19		
HY-2D380-S40-SP07	38.0	80	178	40	108	48	1.24		
HY-2D390-S40-SP07	39.0	82	180	40	110	48	1.29		
HY-2D400-S40-SP07	40.0	85	183	40	113	48	1.32		
HY-2D410-S40-SP07	41.0	90	187	40	117	48	1.38		
HY-2D420-S40-SP07	42.0	91	189	40	119	48	1.42		
HY-2D430-S40-SP07	43.0	91	192	40	122	50	1.47		
HY-2D440-S40-SP08	44.0	93	194	40	124	63	1.65	XONT 080508E SPET 080508E	SP040110 FT-TP15
HY-2D450-S40-SP08	45.0	95	197	40	127	63	1.71		
HY-2D460-S40-SP08	46.0	98	200	40	130	63	1.75		
HY-2D470-S40-SP08	47.0	101	202	40	132	63	1.80		
HY-2D480-S40-SP08	48.0	104	205	40	135	63	1.86		
HY-2D490-S40-SP08	49.0	105	207	40	137	63	1.92		
HY-2D500-S40-SP08	50.0	105	174	40	104	63	1.99		
HY-2D510-S40-SP08	51.0	108	214	40	144	63	2.11		
HY-2D520-S40-SP08	52.0	110	216	40	146	63	2.17		
HY-2D530-S40-SP09	53.0	113	219	40	149	63	2.15	XONT 090608E SPET 090608E	SP040110 FT-TP15
HY-2D540-S40-SP09	54.0	114	221	40	151	63	2.22		
HY-2D550-S40-SP09	55.0	116	224	40	154	63	2.31		
HY-2D560-S40-SP09	56.0	118	227	40	157	63	2.40		
HY-2D570-S40-SP09	57.0	120	229	40	159	63	2.48		
HY-2D580-S40-SP09	58.0	122	232	40	162	63	2.57		
HY-2D590-S40-SP09	59.0	124	234	40	164	63	2.61		
HY-2D600-S40-SP09	60.0	126	237	40	167	63	2.77		
HY-2D610-S40-SP09	61.0	129	241	40	171	63	2.89		
HY-2D620-S40-SP09	62.0	131	243	40	173	63	2.95		
HY-2D630-S40-SP09	63.0	133	246	40	176	63	3.06		



HY series drill body

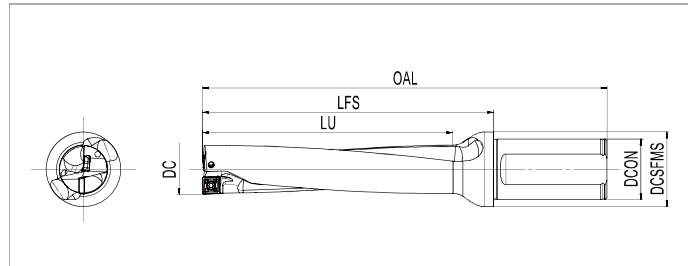
LU/DC=3



Designation	Dimension (mm)						Weight Kg	Insert	Screw & Wrench
	DC	LU	OAL	DCON	LFS	DCSFMS			
HY-3D140 -S20 -SP02	14.0	44	108	20	58	25	0.16 0.16 0.17 0.17 0.18	XONT 020204E SPET 020204E	SP020045 FT-TP06
HY-3D145 -S20 -SP02	14.5	47	110	20	60	25			
HY-3D150 -S20 -SP02	15.0	49	112	20	62	25			
HY-3D155 -S20 -SP02	15.5	51	114	20	64	25			
HY-3D160 -S20 -SP02	16.0	51	116	20	66	25			
HY-3D165 -S20 -SP03	16.5	53	118	20	68	25	0.18 0.29 0.30 0.31 0.31 0.32 0.32 0.32	XONT 030305E SPET 030305E	SP022049 FT-TP07
HY-3D170 -S25 -SP03	17.0	54	119	25	69	32			
HY-3D175 -S25 -SP03	17.5	57	122	25	72	32			
HY-3D180 -S25 -SP03	18.0	57	123	25	73	32			
HY-3D185 -S25 -SP03	18.5	59	125	25	75	32			
HY-3D190 -S25 -SP03	19.0	60	132	25	76	32			
HY-3D193 -S25 -SP03	19.3	63	135	25	79	32			
HY-3D195 -S25 -SP03	19.5	63	135	25	79	32			
HY-3D200 -S25 -SP04	20.0	63	137	25	81	32	0.34 0.34 0.34 0.35 0.36 0.37 0.38 0.39	XONT 040305E SPET 040305E	SP025072 FT-TP08
HY-3D205 -S25 -SP04	20.5	64	138	25	82	32			
HY-3D210 -S25 -SP04	21.0	66	140	25	84	32			
HY-3D215 -S25 -SP04	21.5	68	142	25	86	32			
HY-3D220 -S25 -SP04	22.0	69	143	25	87	32			
HY-3D225 -S25 -SP04	22.5	72	146	25	90	32			
HY-3D230 -S25 -SP04	23.0	73	147	25	91	32			
HY-3D235 -S25 -SP04	23.5	75	149	25	93	32			

HY series drill body

LU/DC=3

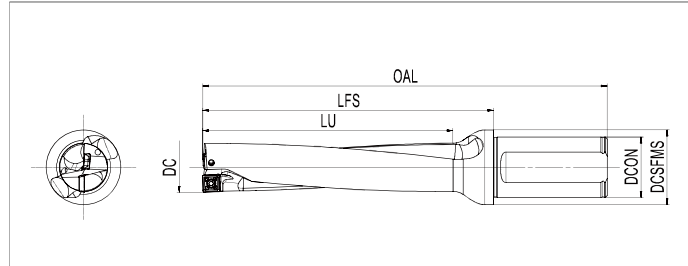


Designation	Dimension (mm)						Weight Kg	Insert	Screw & Wrench
	DC	LU	OAL	DCON	LFS	DCSFMS			
HY-3D240-S25-SP05	24.0	77	151	25	95	32	0.39	XONT 050305E SPET 050305E	SP030082 FT-TP09
HY-3D245-S25-SP05	24.5	79	153	25	97	32	0.39		
HY-3D250-S25-SP05	25.0	81	155	25	99	32	0.41		
HY-3D253-S25-SP05	25.3	81	155	25	99	32	0.41		
HY-3D255-S25-SP05	25.5	81	156	25	100	32	0.42		
HY-3D260-S32-SP05	26.0	81	162	32	102	40	0.63		
HY-3D265-S32-SP05	26.5	83	164	32	104	40	0.64		
HY-3D270-S32-SP05	27.0	85	165	32	105	40	0.65		
HY-3D275-S32-SP05	27.5	88	168	32	108	40	0.67		
HY-3D280-S32-SP05	28.0	88	169	32	109	40	0.68		
HY-3D285-S32-SP05	28.5	88	171	32	111	40	0.69		
HY-3D290-S32-SP05	29.0	90	172	32	112	40	0.71		
HY-3D295-S32-SP05	29.5	93	175	32	115	40	0.72		
HY-3D300-S32-SP06	30.0	95	177	32	117	40	0.72	XONT 060406E SPET 060406E	SP035094 FT-TP10
HY-3D305-S32-SP06	30.5	96	178	32	118	40	0.72		
HY-3D310-S40-SP06	31.0	97	191	40	121	48	1.09		
HY-3D315-S40-SP06	31.5	98	192	40	122	48	1.1		
HY-3D320-S40-SP06	32.0	100	194	40	124	48	1.12		
HY-3D325-S40-SP06	32.5	102	196	40	126	48	1.14		
HY-3D330-S40-SP06	33.0	103	198	40	128	48	1.15		
HY-3D335-S40-SP06	33.5	105	200	40	130	48	1.17		
HY-3D340-S40-SP06	34.0	106	201	40	131	48	1.19		
HY-3D345-S40-SP06	34.5	109	204	40	134	48	1.22		
HY-3D350-S40-SP06	35.0	110	205	40	135	48	1.24		
HY-3D355-S40-SP06	35.5	112	207	40	137	48	1.26		



HY series drill body

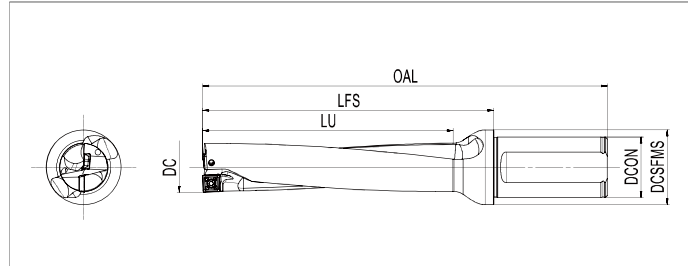
LU/DC=3



Designation	Dimension (mm)						Weight Kg	Insert	Screw & Wrench
	DC	LU	OAL	DCON	LFS	DCSFMS			
HY-3D360-S40-SP07	36.0	112	209	40	139	48	1.28	XONT 070406E SPET 070406E	SP035094 FT-TP10
HY-3D370-S40-SP07	37.0	115	212	40	142	48	1.33		
HY-3D380-S40-SP07	38.0	118	216	40	146	48	1.39		
HY-3D383-S40-SP07	38.3	119	217	40	147	48	1.41		
HY-3D385-S40-SP07	38.5	119	217	40	147	48	1.42		
HY-3D390-S40-SP07	39.0	121	219	40	149	48	1.44		
HY-3D395-S40-SP07	39.5	123	221	40	151	48	1.44		
HY-3D400-S40-SP07	40.0	125	223	40	153	48	1.47		
HY-3D405-S40-SP07	40.5	127	223	40	153	48	1.57		
HY-3D410-S40-SP07	41.0	127	227	40	157	48	1.62		
HY-3D420-S40-SP07	42.0	130	230	40	160	48	1.68		
HY-3D430-S40-SP07	43.0	133	234	40	164	50	1.77		
HY-3D440-S40-SP08	44.0	136	237	40	167	50	1.81	XONT 080508E SPET 080508E	SP040110 FT-TP15
HY-3D450-S40-SP08	45.0	104	242	40	172	50	1.90		
HY-3D460-S40-SP08	46.0	144	246	40	176	50	1.98		
HY-3D470-S40-SP08	47.0	146	249	40	179	63	2.12		
HY-3D480-S40-SP08	48.0	149	253	40	183	63	2.30		
HY-3D490-S40-SP08	49.0	152	256	40	186	63	2.39		
HY-3D495-S40-SP08	49.5	153	258	40	188	63	2.31		
HY-3D500-S40-SP08	50.0	155	260	40	190	63	2.37		
HY-3D510-S40-SP08	51.0	158	264	40	194	63	2.58		
HY-3D520-S40-SP08	52.0	161	267	40	197	63	2.69		
HY-3D530-S40-SP09	53.0	164	271	40	201	63	2.71	XONT 090608E SPET 090608E	SP040110 FT-TP15
HY-3D540-S40-SP09	54.0	167	274	40	204	63	2.81		
HY-3D550-S40-SP09	55.0	171	279	40	209	63	2.94		
HY-3D560-S40-SP09	56.0	174	283	40	213	63	3.07		
HY-3D570-S40-SP09	57.0	177	286	40	216	63	3.19		
HY-3D580-S40-SP09	58.0	180	290	40	220	63	3.32		
HY-3D590-S40-SP09	59.0	183	293	40	223	63	3.41		
HY-3D600-S40-SP09	60.0	186	297	40	227	63	3.55		
HY-3D610-S40-SP09	61.0	190	302	40	232	63	3.71		
HY-3D620-S40-SP09	62.0	193	305	40	235	63	3.94		
HY-3D630-S40-SP09	63.0	196	309	40	239	63	4.10		

HY series drill body

LU/DC=4

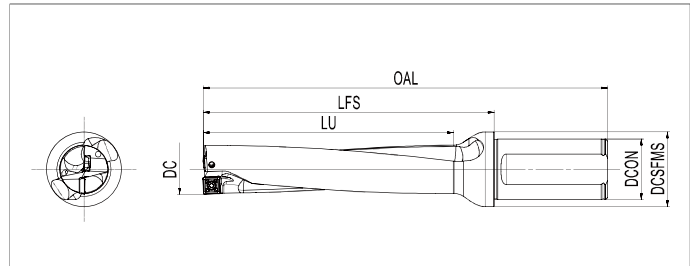


Designation	Dimension (mm)						Weight Kg	Insert	Screw & Wrench
	DC	LU	OAL	DCON	LFS	DCSFMS			
HY-4D140-S20-SP02	14.0	59	122	20	72	25	0.17	XONT 020204E SPET 020204E	SP020045 FT-TP06
HY-4D145-S20-SP02	14.5	62	125	20	75	25			
HY-4D150-S20-SP02	15.0	64	127	20	77	25			
HY-4D155-S20-SP02	15.5	66	129	20	79	25			
HY-4D160-S20-SP02	16.0	67	132	20	82	25			
HY-4D165-S20-SP03	16.5	69	134	20	84	25	0.19	XONT 030305E SPET 030305E	SP022049 FT-TP07
HY-4D170-S25-SP03	17.0	71	142	25	86	32			
HY-4D175-S25-SP03	17.5	73	145	25	89	32			
HY-4D180-S25-SP03	18.0	75	147	25	91	32			
HY-4D185-S25-SP03	18.5	77	149	25	93	32			
HY-4D190-S25-SP03	19.0	79	151	25	95	32			
HY-4D193-S25-SP03	19.3	83	155	25	99	32			
HY-4D195-S25-SP03	19.5	83	155	25	99	32			
HY-4D200-S25-SP04	20.0	83	157	25	101	32	0.36	XONT 040305E SPET 040305E	SP025072 FT-TP08
HY-4D205-S25-SP04	20.5	86	160	25	104	32			
HY-4D210-S25-SP04	21.0	89	161	25	105	32			
HY-4D215-S25-SP04	21.5	89	163	25	107	32			
HY-4D220-S25-SP04	22.0	91	165	25	109	32			
HY-4D225-S25-SP04	22.5	93	168	25	112	32			
HY-4D230-S25-SP04	23.0	95	170	25	114	32			
HY-4D240-S25-SP05	24.0	101	175	25	119	32	0.42	XONT 050305E SPET 050305E	SP030082 FT-TP09
HY-4D245-S25-SP05	24.5	102	177	25	121	32			
HY-4D250-S25-SP05	25.0	107	180	25	124	32			
HY-4D253-S25-SP05	25.3	107	180	25	124	32			
HY-4D260-S32-SP05	26.0	107	188	32	128	40			
HY-4D265-S32-SP05	26.5	109	190	32	130	40			
HY-4D270-S32-SP05	27.0	112	192	32	132	40			
HY-4D280-S32-SP05	28.0	115	197	32	137	40			
HY-4D290-S32-SP05	29.0	120	201	32	141	40			
HY-4D295-S32-SP05	29.5	123	204	32	144	40			
HY-4D300-S32-SP06	30.0	125	207	32	147	40	0.80	XONT 060406E SPET 060406E	SP035094 FT-TP10
HY-4D310-S40-SP06	31.0	128	222	40	152	48			
HY-4D320-S40-SP06	32.0	131	226	40	156	48			
HY-4D330-S40-SP06	33.0	136	231	40	161	48			
HY-4D340-S40-SP06	34.0	140	235	40	165	48			
HY-4D350-S40-SP06	35.0	145	240	40	170	48			



HY series drill body

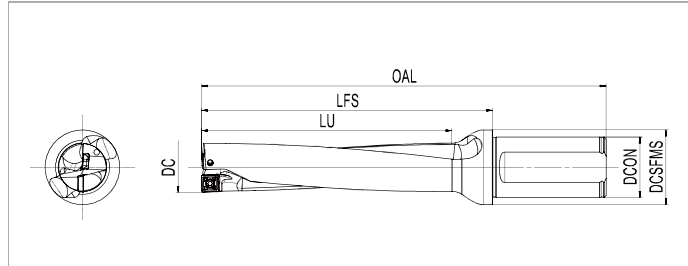
LU/DC=4



Designation	Dimension (mm)						Weight Kg	Insert	Screw & Wrench
	DC	LU	OAL	DCON	LFS	DCSFMS			
HY-4D360-S40-SP07	36.0	148	245	40	175	48	1.43	XONT 070406E SPET 070406E	SP035094 FT-TP10
HY-4D370-S40-SP07	37.0	151	249	40	179	48	1.48		
HY-4D380-S40-SP07	38.0	157	254	40	184	48	1.54		
HY-4D390-S40-SP07	39.0	161	258	40	188	48	1.62		
HY-4D400-S40-SP07	40.0	167	263	40	193	48	1.77		
HY-4D410-S40-SP07	41.0	168	268	40	198	48	1.86		
HY-4D420-S50-SP07	42.0	172	282	50	202	63	2.64		
HY-4D430-S50-SP07	43.0	176	287	50	207	63	2.74		
HY-4D440-S50-SP08	44.0	180	291	50	211	63	2.83	XONT 080508E SPET 080508E	SP040110 FT-TP15
HY-4D450-S50-SP08	45.0	185	297	50	217	63	2.95		
HY-4D460-S50-SP08	46.0	188	302	50	222	63	3.05		
HY-4D470-S50-SP08	47.0	193	306	50	226	63	3.12		
HY-4D480-S50-SP08	48.0	197	311	50	231	63	3.25		
HY-4D490-S50-SP08	49.0	201	315	50	235	63	3.36		
HY-4D500-S50-SP08	50.0	204	320	50	240	63	3.51		
HY-4D505-S50-SP08	50.5	208	322	50	242	63	3.56		
HY-4D510-S50-SP08	51.0	209	325	50	245	63	3.61		
HY-4D520-S50-SP08	52.0	213	329	50	249	63	3.75		
HY-4D530-S50-SP09	53.0	218	333	50	253	63	3.83	XONT 090608E SPET 090608E	SP040110 FT-TP15
HY-4D540-S50-SP09	54.0	221	338	50	258	63	3.92		
HY-4D550-S50-SP09	55.0	226	343	50	263	63	4.12		
HY-4D560-S50-SP09	56.0	230	349	50	269	63	4.32		
HY-4D570-S50-SP09	57.0	234	353	50	273	63	4.45		
HY-4D580-S50-SP09	58.0	238	357	50	277	63	4.63		
HY-4D590-S50-SP09	59.0	242	362	50	282	63	4.92		
HY-4D600-S50-SP09	60.0	246	367	50	287	63	5.23		
HY-4D610-S50-SP09	61.0	250	372	50	292	63	5.55		
HY-4D620-S50-SP09	62.0	254	376	50	296	63	5.87		
HY-4D630-S50-SP09	63.0	258	381	50	301	63	6.18		

HY series drill body

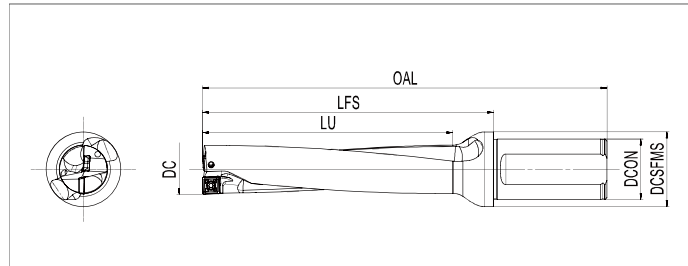
LU/DC=5



Designation	Dimension (mm)						Weight Kg	Insert	Screw & Wrench
	DC	LU	OAL	DCON	LFS	DCSFMS			
HY-5D140-S20-SP02	14.0	73	136	20	86	25	0.18	XONT 020204E SPET 020204E	SP020045 FT-TP06
HY-5D145-S20-SP02	14.5	76	139	20	89	25			
HY-5D150-S20-SP02	15.0	79	142	20	92	25			
HY-5D155-S20-SP02	15.5	82	145	20	95	25			
HY-5D160-S20-SP02	16.0	83	148	20	98	25			
HY-5D165-S20-SP03	16.5	86	151	20	101	25	0.20	XONT 030305E SPET 030305E	SP022049 FT-TP07
HY-5D170-S25-SP03	17.0	88	159	25	103	32			
HY-5D175-S25-SP03	17.5	91	163	25	107	32			
HY-5D180-S25-SP03	18.0	93	165	25	109	32			
HY-5D185-S25-SP03	18.5	96	168	25	112	32			
HY-5D190-S25-SP03	19.0	98	170	25	114	32			
HY-5D193-S25-SP03	19.3	102	174	25	118	32			
HY-5D195-S25-SP03	19.5	102	174	25	118	32			
HY-5D200-S25-SP04	20.0	103	177	25	121	32	0.38	XONT 040305E SPET 040305E	SP025072 FT-TP08
HY-5D205-S25-SP04	20.5	105	179	25	123	32			
HY-5D210-S25-SP04	21.0	108	182	25	126	32			
HY-5D215-S25-SP04	21.5	111	184	25	128	32			
HY-5D220-S25-SP04	22.0	113	187	25	131	32			
HY-5D230-S25-SP04	23.0	119	194	25	138	32			
HY-5D240-S25-SP05	24.0	125	199	25	143	32	0.47	XONT 050305E SPET 050305E	SP030082 FT-TP09
HY-5D250-S25-SP05	25.0	132	205	25	149	32			
HY-5D253-S25-SP05	25.3	132	205	25	149	32			
HY-5D260-S32-SP05	26.0	133	214	32	154	40			
HY-5D265-S32-SP05	26.5	136	216	32	156	40			
HY-5D270-S32-SP05	27.0	139	219	32	159	40			
HY-5D280-S32-SP05	28.0	143	225	32	165	40			
HY-5D280-S32-SP05	28.0	143	225	32	165	40			
HY-5D290-S32-SP05	29.0	149	231	32	171	40			

HY series drill body

LU/DC=5



Designation	Dimension (mm)						Weight Kg	Insert	Screw & Wrench
	DC	LU	OAL	DCON	LFS	DCSFMS			
HY-5D300-S32-SP06	30.0	155	237	32	177	40	0.88	XONT 060406E SPET 060406E	SP035094 FT-TP10
HY-5D310-S40-SP06	31.0	159	253	40	183	48	1.26		
HY-5D320-S40-SP06	32.0	164	258	40	188	48	1.31		
HY-5D330-S40-SP06	33.0	169	264	40	194	48	1.36		
HY-5D340-S40-SP06	34.0	175	270	40	200	48	1.42		
HY-5D350-S40-SP06	35.0	181	276	40	206	48	1.49		
HY-5D360-S40-SP07	36.0	186	282	40	212	48	1.57	XONT 070406E SPET 070406E	SP035094 FT-TP10
HY-5D370-S40-SP07	37.0	189	286	40	216	48	1.64		
HY-5D380-S40-SP07	38.0	195	292	40	222	48	1.72		
HY-5D390-S40-SP07	39.0	201	298	40	228	48	1.79		
HY-5D400-S40-SP07	40.0	208	304	40	234	48	1.84		
HY-5D410-S40-SP07	41.0	215	310	40	240	48	2.11		
HY-5D420-S50-SP07	42.0	219	325	50	245	63	2.85		
HY-5D430-S50-SP07	43.0	223	331	50	251	63	2.96		
HY-5D440-S50-SP08	44.0	226	335	50	255	63	3.15	XONT 080508E SPET 080508E	SP040110 FT-TP15
HY-5D450-S50-SP08	45.0	230	342	50	262	63	3.28		
HY-5D460-S50-SP08	46.0	234	348	50	268	63	3.41		
HY-5D470-S50-SP08	47.0	240	353	50	273	63	3.52		
HY-5D480-S50-SP08	48.0	245	359	50	279	63	3.67		
HY-5D490-S50-SP08	49.0	250	364	50	284	63	3.82		
HY-5D500-S50-SP08	50.0	254	370	50	290	63	3.99		
HY-5D510-S50-SP08	51.0	259	376	50	296	63	4.13		
HY-5D520-S50-SP08	52.0	265	381	50	301	63	4.30		